

# WEEKLY UPDATE



COTATI-ROHNERT PARK  
UNIFIED SCHOOL DISTRICT

**WE'RE  
HIRING**

**APRIL 4 - APRIL 8**

***JOB OPPORTUNITIES  
RPCEA MEMBERS***

*We are actively recruiting for PK-12 teaching positions for the 2022-2023 school year. Special Education opportunities are already posted, and general education opportunities will be posted by the beginning of next week. If you are interested in a lateral transfer, please visit the CRPUSD Edjoin page linked [here](#) to apply for open positions.*

***SPECIAL EDUCATION***

*The Special Education Department has been helping to coordinate transition IEP's for all students who will be moving from PK to Elementary, Elementary to Middle, Middle to High, and High School to County Transition Program. For our youngest learners coming from our District PK program housed at University Elementary, this includes a comprehensive formal assessment. We are planning for our extended school year program and are excited this will be happening in partnership with Summer School programs this year.*



CRPUSD - STAFF

# WEEKLY UPDATE



COTATI-ROHNERT PARK  
UNIFIED SCHOOL DISTRICT

APRIL 4 - APRIL 8

## TECHNOLOGY SERVICES

*This summer, the Technology Services Department will be conducting a full pull back of all student one-to-one devices district wide. This means any student that is assigned a device will be turning it back in before the end of the school year. This applies to both Elementary and Secondary devices. This does not apply to SPED assistive technology or ESY students.*

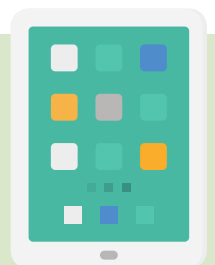
*We will be coordinating with site admin to make this herculean task (we have 5400 devices to pull back!) as smooth and painless as possible for our teachers. You may be asking why we are doing this now. During the last couple of years our district was required to move to a one-to-one model with very little time to refine our processes related to student technology distribution and tracking. We have learned a lot since our initial distribution at the beginning of the pandemic and will take this opportunity to pull back the whole fleet of student devices to properly inventory, repair, replace, update and assign the devices in the most efficient way possible.*

*Students will receive back the exact same device they turn in this year unless they are replaced with newer units or the student is moving to a grade that requires different hardware. We expect this to be the only full pullback necessary for the foreseeable future and redistribution of devices next Fall should be smoother than ever. More info regarding the pullback process will be shared with you soon.*

*Thank you!*



1-707-792-4722 WWW.CRPUSD.ORG  
ROCHELLE\_GREGORI@CRPUSD.ORG



CRPUSD - STAFF

# WEEKLY UPDATE



COTATI-ROHNERT PARK  
UNIFIED SCHOOL DISTRICT

APRIL 4 - APRIL 8

## STAFF SPOTLIGHT

*Mary Peterson is a Speech and Language Pathologist at both Marguerite Hahn Elementary School and Richard Crane Elementary School. Mary individualizes her lessons for each student and often tailors sessions to their interests. She collaborates with staff to ensure that students are being seen at the most beneficial time, that they work with appropriate peers, and that students are generalizing their successes into the classroom. Mary is professional, kind and concise during IEP meetings and she makes sure that the families understand their students' needs, how they can support their students, and makes sure they know that they are part of the team. In addition to a full caseload, Mary also makes time to have RTI groups, where she targets specific skills for students who are not on IEPs, for short periods of time. Mary is a wonderful addition to both the Hahn and Richard Crane communities.*



1-707-792-4722 WWW.CRPUSD.ORG  
ROCHELLE\_GREGORI@CRPUSD.ORG